

Anti-H_CSF1R hlgG1 Antibody(emactuzumab)

Product information

GM-28931AB-10	10 µg
GM-28931AB-100	100 µg
GM-28931AB-1000	1 mg

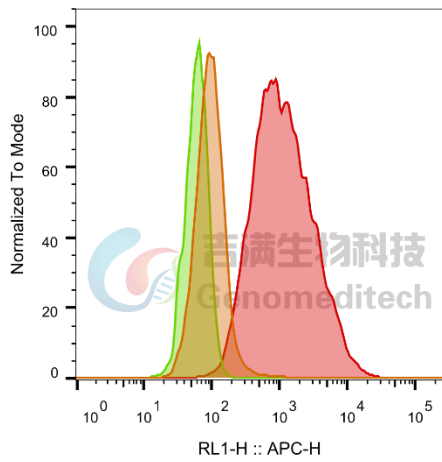
Antibody Information

Species Reactivity	Human;
Clone	emactuzumab
Source/Isotype	Monoclonal human IgG1, κ
Application	Flow cytometry
Specificity	Detects CSF1R
Gene	CSF1R
Other Names	BANDDOS, C-FMS, CD115, CSF-1R, CSFR, FIM2, FMS, GPSC, HDLS, HDLS1, M-CSF-R
Gene ID	1436(human)
Background	The CSF1R gene encodes a receptor tyrosine kinase, which is the receptor for colony-stimulating factor 1 (CSF1R). CSF1R is a cell surface receptor that plays a crucial role in regulating the development, proliferation, and function of macrophages and dendritic cells. Research has shown that CSF1R plays a key role in cell proliferation, survival, and migration, and is closely associated with the pathogenesis of various diseases such as chronic inflammation, autoimmune diseases, and cancer. Therefore, studies on the CSF1R gene are of significant importance in understanding the mechanisms underlying the onset and progression of these diseases.
Storage	Store at 2-8°C short term (1-2 weeks).Store at ≤ -20°C long term. Avoid repeated freeze-thaw.
Formulation	Phosphate-buffered solution, pH 7.2.
Endotoxin	< 1 EU/mg, determined by LAL gel clotting assay

Data Examples

Flow cytometry

H_CSF1R CHO-K1 Cell line (Catalog # GM-C19080) was stained with Anti-H_CSF1R hlgG1 Antibody(emactuzumab) (Catalog # GM-28931AB) or isotype control antibody, followed by anti-Human IgG APC-conjugated Secondary Antibody.



SampleID	Geometric Mean : RL1-H
CHO-K1 anti-H_CSF1R+APC-2nd Ab	95.6
CHO-K1 H_CSF1R H_IgG+APC-2Nd Ab	59.9
CHO-K1 H_CSF1R anti-H_CSF1R+APC-2nd Ab	1112

Fig. FACS